

BACKGROUND

Four central areas characterise the more difficult entrance of migrants into training and employment:

- End of school qualifications
- Career guidance
- Training success
- Participation in further training

→ *Cross-cutting theme:*
Language learning / Language skills

AIMS

- To integrate migrants more successfully into the training and job market
- To strengthen interest in vocational training and development
- Greater transparency with regard to the range of offers available
- Further expanding networking structures

CONTACT



Competence Centre for Education and Employment for Migrants in Cologne

Office:
Lernende Region – Netzwerk Köln e.V.

Julius-Bau-Str. 2 info@kobam.de
51063 Köln www.kobam.de

Tel.: 0 22 1 | 99 08 29 228

Opening hours:
Tuesday – Friday 9am – 4pm
PERSONAL CONSULTATION BY APPOINTMENT ONLY!

AN INITIATIVE BY:



CONTRIBUTERS:



WITH SUPPORT FROM THE INTEGRATION COUNCIL OF COLOGNE.



**Kompetenzzentrum Bildung und Arbeit
für Migrantinnen und Migranten in Köln**

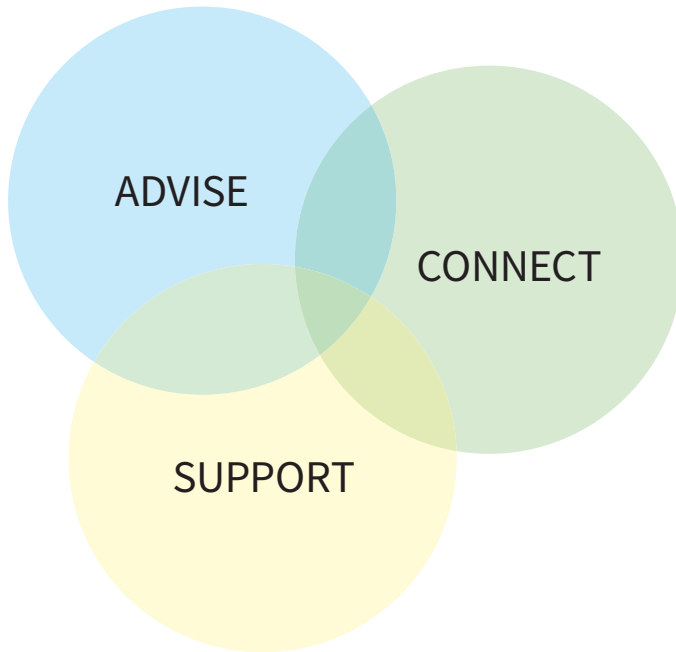
Competence Centre for Education and Employment for Migrants in Cologne

Advise – Support – Connect



An initiative by the Municipal Alliance for Employment

WHAT IS KoBAM?



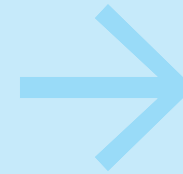
KoBAM IS ...

... a cross-institutional help centre for migrants, which combines resources and know-how all 'under one roof'.

It also simultaneously serves as a point of contact for the existing Cologne Advice and Support Association as well as Companies as Employers.

TARGET GROUPS

Citizens of Cologne with a migrant background who have questions regarding training or employment



ACTIVE AREAS

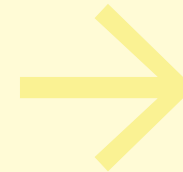
Training and orientation advice with guidance on current offers in active areas:

- Transition from education to employment
- Further development
- Job market

→ Cross-cutting themes:

- Career support of women with migrant background
- Language skills

Companies of Cologne



A help centre to support companies with questions regarding training and further development as well as being an employer.

Advice and Support Structure in Cologne



Establishment of a support structure for the advisory landscape of Cologne as well as the introduction of measures to increase the level of transparency surrounding available offers.